



Coordinate Plane

Coordinate plane - a coordinate system formed by the intersection of a horizontal number line, called the x-axis, and a vertical number line called the y-axis.

Points are labeled with capital letters.

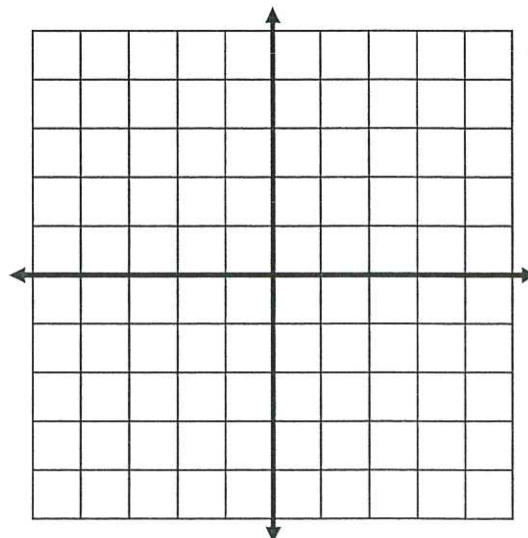
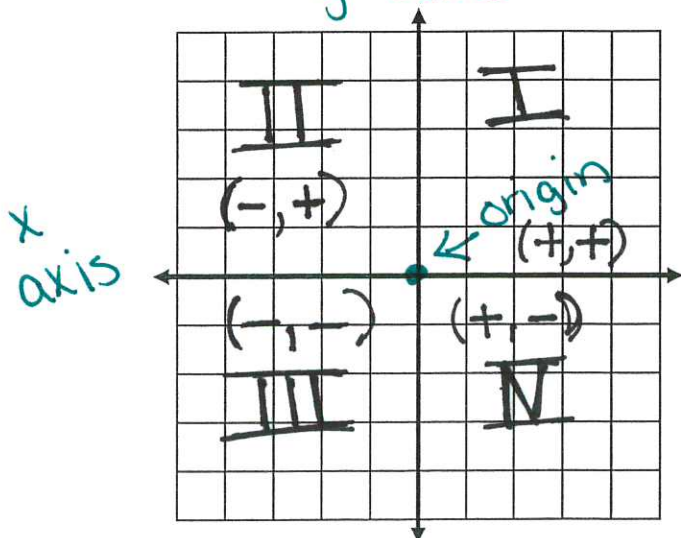
Ordered Pair - a pair of numbers that can be used to represent a point in the coordinate plane, often expressed as (x,y).

The *first* coordinate, x, of an ordered pair is the x-coordinate.
It tells how far left or right to move from the origin.

The *second* coordinate, y, of an ordered pair is the y-coordinate.
It tells how far up or down to move from the origin.

Quadrants four regions that the coordinate plane is divided into

y-axis

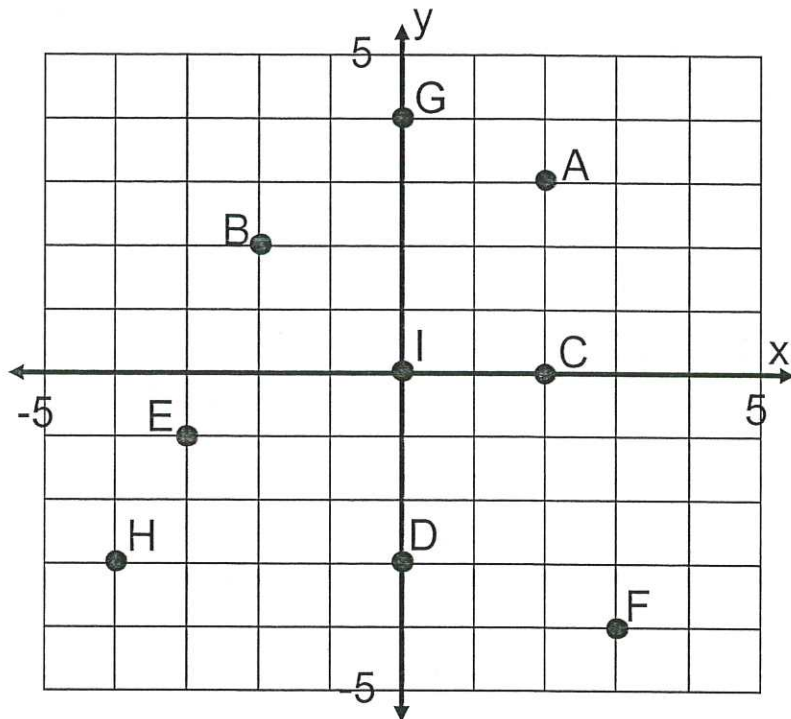


The graph of (x,y) is the point in the plane that corresponds to the ordered pair (x, y) .

Write the order pairs that correspond to the points labeled.

ex

- A(2,3)
- B(-2,2)
- C(2,0)
- D(0,-3)
- E(-3,-1)
- F(3,-4)
- G(0,4)
- H(-4,-3) I(0,0)



Plot and label the ordered pairs in the coordinate grid.

ex

- A(4,1)
- B(0,1)
- C(-2,5)
- D(-3,0)
- E(3,-2)
- F(1,-2)
- G(-4,-3)
- H(0,0)

