

Intro to Functions HW 1

Date _____ Period _____

- 1) A(n) _____ number is in the domain of a function and a(n) _____ number is in the range of a function.

Identify the domain and range of the function. Tell whether the relation is a function. Explain (in complete sentences).

2) Input Output

-----	-----
0	5
1	7
2	15
3	44

Domain:

Range:

Function?

3) Input Output

-----	-----
3	7
5	5
7	3
8	2

Domain:

Range:

Function?

4) Input Output

-----	-----
6	5
12	7
21	10
42	17

Domain:

Range:

Function?

5) Input Output

-----	-----
0	7.5
1	9.5
2	11.5
3	13.5

Domain:

Range:

Function?

6) Input	Output
7	13
11	8
21	13
35	20

Domain:

Range:

Function?

7) Input	Output
$\frac{1}{2}$	0

$\frac{2}{3}$	1
---------------	---

$\frac{3}{4}$	3
---------------	---

5

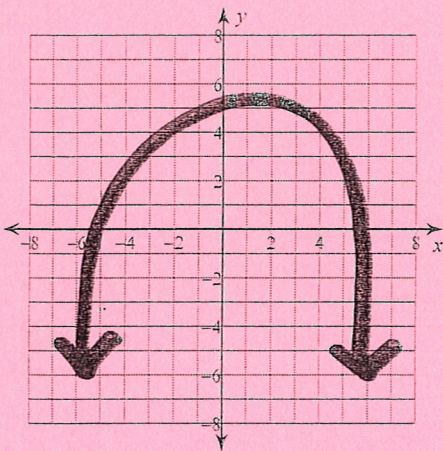
Domain:

Range:

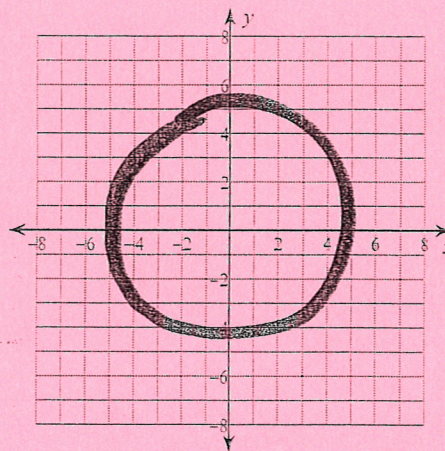
Function?

Tell whether the graphs represent functions. Explain your reasoning (in complete sentences).

8)



9)



Simplify each expression.

10) $8(1 - n) + 3(8 - 5n)$

Evaluate each using the values given.

11) $jh + j(k - k)$; use $h = 4$, $j = 6$, and $k = 4$